

A man with a beard, wearing a plaid shirt over a maroon sweater, is looking down at a laptop. He is standing in front of a server rack filled with Dell PowerEdge servers. The servers have a hexagonal mesh pattern and the word 'CHALLENGE' is visible on some of the units. The overall scene is dimly lit, with the server rack providing a blue-toned background.

PowerEdge Servers

YOUR **INNOVATION** ENGINE

NextGen Server presentation

DELLTechnologies

INTRODUCING THE NEW

Dell EMC PowerEdge Server Portfolio



YOUR **INNOVATION ENGINE**

*Technology and solutions that help you **innovate**, **adapt**, and **grow***

Current Dell EMC PowerEdge Server Portfolio 15G Intel Q3 Update

Specialized- EDGE&TELCO



XR11



XR12

C-SERIES



C6520

MODULAR



MX750c

Specialized- GPU OPTIMIZED



R750xa

1S RACK & TOWER



R250



R350



T150



T350

2S TOWER



T550

2S RACK



R550



R450



R750xs



R650xs



R750



R650

YOUR INNOVATION ENGINE

Technology and solutions that help you innovate, adapt, and grow

Prior Platform Comparison

New capabilities, relative to the prior Mehlow platform with Intel Xeon E-2200 processors, in **Bolded Blue**

Platform	Prior Platform	New Platform
CPU	Intel Xeon E-2200 processors (Coffee Lake-E)	Intel Xeon E-2300 processors (Rocket Lake-E)
Socket	Socket H4 (LGA 1151)	Socket H5 (LGA 1200)
Scalability	1-Socket Only	1-Socket Only
Core	Up to 8 Cores No Server Graphics Support	Up to 8 Cores Gen12 Graphics Support (direct display support only)
Memory	2 channels DDR4 2 DPC UDIMM ECC Up to 2666 MT/s	2 channels DDR4 2 DPC UDIMM ECC Up to 3200 MT/s
PCIe	16 lanes PCIe 3.0 Bifurcation support: 1x16+1x4, 2x8, 1x8+2x4	20 lanes PCIe 4.0 Bifurcation support: 1x16+1x4, 2x8+1x4, 1x8+3x4
PCH	Intel C240 Series Chipsets DMI x4 3.0 Up to 8 SATA ports Up to 24 PCIe 3.0 lanes Up to 10 USB 3.2 Gen 1x1 (5 Gb) ports Up to 6 USB 3.2 Gen 2x1 (10 Gb) ports eSPI Supported	Intel C250 Series Chipsets DMI x8 3.0 Up to 8 SATA ports Up to 24 PCIe 3.0 lanes USB 3.2 Gen 2x1 (10 Gb) up to 10 ports USB 3.2 Gen 2x2 (20 Gb) up to 3 ports eSPI supported
Performance	Baseline	Up to a 17% performance improvement over the prior generation¹

¹ See backup for workloads and configurations. Results may vary.

Dell EMC PowerEdge R250

Support for up to 4 Drives

- 4 x 3.5" cabled/hot-plug SATA/SAS HDD/SSDs
- BOSS-S1 (PCIe)
- HW RAID, Internal PERC

Support for high-speed and memory capacity

- Support 3200 MT/Sec DDR4 and 32GB DIMMS, up to 128GB



1 Socket Capable

- Latest Intel Rocket Lake processors; up to 28% faster IO than Coffee Lake
- . Xeon® E3 and Pentium CPUs

Flexible I/O

- Faster I/O throughput: PCIe Gen 4

- Latest Intel Technology - Rocket Lake E2300 series CPUs
- Designed for budget-conscious businesses
- Industry-leading manageability and security



Offers up to **17% CPU** performance Increase



Increases memory speed by **20%** from 2666MT/s to 3200MT/s



Up to **2x** memory capacity increase



Up to **2x** bandwidth & frequency with PCIe 4.0

TARGET WORKLOADS



Web Server/Hosting

Performance, storage and memory capacity to process, store, and deliver web pages to clients



File and print

Get organized efficiently with simple set-up and operations



Mail and messaging

Share and connect quicker with powerful computing capability



Collaboration / sharing

Built-in features to enable collaborative applications and share information



Backup Recovery

Embedded software RAID to replicate and safeguard your data

Whether users are installing a server for the first time or enhancing existing IT infrastructure, this new server is an excellent platform for growing businesses and organizations

Dell EMC PowerEdge R350

Availability features

- Hot-plug redundant power supplies,
- Hot-plug BOSS
- Hot-plug HDD/SSD
- PERC10.5 & 11 SW and HW RAID, Internal PERC and Add-in Card options

Support for high-speed and memory capacity

- Support 3200 MT/Sec DDR4 and 32GB DIMMS, up to 128GB



1 Socket Capable

- Latest Intel Rocket Lake processors; up to 28% faster IO than Coffee Lake
- . Xeon® E3 and Pentium CPUs

Flexibility

- Faster I/O throughput: PCIe Gen 4
- Up to 4x 3.5" SATA/SAS or 8x 2.5" SATA/SAS

- Latest Intel Technology - Rocket Lake E2300 series CPUs
- Designed for budget-conscious businesses
- Industry-leading manageability and security



Offers up to **17% CPU** performance Increase



Increases memory speed by **20%** from 2666MT/s to 3200MT/s



Up to **2x** memory capacity increase



Up to **2x** bandwidth & frequency with PCIe 4.0

TARGET WORKLOADS



Web Server/Hosting

Performance, storage and memory capacity to process, store, and deliver web pages to clients



File and print

Get organized efficiently with simple set-up and operations



Mail and messaging

Share and connect quicker with powerful computing capability



Collaboration / sharing

Built-in features to enable collaborative applications and share information



Backup Recovery

Embedded software RAID to replicate and safeguard your data

These servers are suitable for data centers, cloud infrastructure, and some edge environments with high-availability and redundancy features where serviceability is a priority (SMB rack infrastructure environments).

Dell EMC PowerEdge T150

Support for up to 4 Drives

- Cabled drives
- Hot plug BOSS-S1
- HW RAID, Internal PERC

Support for high-speed and memory capacity

- 4 DDR4 DIMMs, up to 1298GB
- 3200 MT/s

1 Socket Capable

- Latest Intel Rocket Lake processors; up to 28% faster IO than Coffee Lake
- Xeon® E3 and Pentium CPUs



Flexible I/O

- Faster I/O throughput: PCIe Gen 4

- Latest Intel Technology
- Enhanced thermal efficiency and quiet office friendly acoustics
- Industry-leading manageability and security



Offers up to **17% CPU** performance Increase



Increases memory speed by **20%** from 2666MT/s to 3200MT/s



Up to **2x** memory capacity increase



Up to **2x** bandwidth & frequency with PCIe 4.0

TARGET WORKLOADS



File and print

Get organized efficiently with simple set-up and operations



Point of sale

Faster and reliable payment processing with secure infrastructure



Mail and messaging

Share and connect quicker with powerful computing capability



Collaboration / sharing

Collaborate and connect efficiently



Databases

Work quicker with powerful computing capability

My First Server - Ideal for value-sensitive customers looking for full performance, small business and service providers seeking small footprint tower servers that are easy to install and manage inside or outside of the data center.

Dell EMC PowerEdge T350

1 Socket Capable

- Latest Intel Rocket Lake processors; up to 28% faster IO than Coffee Lake
- Xeon® E3 and Pentium CPUs

Support for high-speed and memory capacity

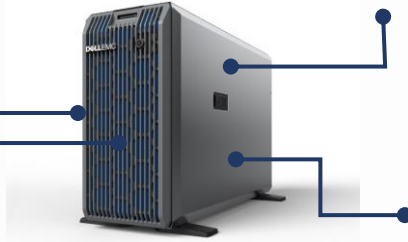
- Up to 4 x UDIMMs, up to 128GB
- ECC DDR4 up to 3200 MT/s

Flexible storage

- Hot-plug BOSS
- Hot-plug HDD/SSD
- PERC10.5 & 11 SW and HW RAID, Internal PERC and Add-in Card options

Expandable I/O and Storage

- Faster I/O throughput: PCIe Gen 4
- Up to 8:x 3.5" SATA/SAS or 8: 2.5" SATA/SAS
- Hot-plug redundant power supplies



- Latest Intel Technology - Rocket Lake E2300 series CPUs,
- New smaller streamlined chassis design chassis, reduces the size by 37% without losing any features
- Industry-leading manageability and security



37% smaller size
without compromise



Offers up
to **17% CPU**
performance
Increase



Increases
memory speed by
20% from
2666MT/s to
3200MT/s



Up to **2x**
memory
capacity
increase



Up to **2x**
bandwidth &
frequency with
PCIe 4.0

TARGET WORKLOADS



File and print

Get organized efficiently with simple set-up and operations



Point of sale

Faster and reliable payment processing with secure infrastructure



Mail and messaging

Share and connect quicker with powerful computing capability



Collaboration / sharing

Collaborate and connect efficiently



Databases

Work quicker with powerful computing capability

Reliable and scalable tower server with a smaller streamlined chassis for small and medium business, remote offices, branch offices, and service providers seeking a secure and scalable tower server that is easy to install, manage, and deploy.

Dell EMC PowerEdge T550

- Maximize performance with up to two 3rd Generation Intel® Xeon® Scalable processors with up to 32 cores
- Office-friendly acoustics, ease of management and industry-leading security
- Expandability for growth and performance
- DDR4: up to 16 x DDR4 RDIMMs (1TB max)
- Up to 5x PCIe Gen4 slots (all x16) + 1x PCIe Gen3 (x8)
- Support for up to two double-width, or five single-width accelerators (Nvidia T4, A10, A30 and A40)
- Mix and match NVMe, HDD and SSD drives to create ideal configuration for customers



- Latest Intel Technology - 3rd Generation Intel® Xeon® SP series CPUs
- New smaller chassis design offers higher performance technologies in a quieter, more management-friendly enclosure
- Industry-leading manageability and security



Smaller size
Full features



Offers up
to **40% CPU**
performance
Increase



**GPU support in
tower mode**



**Front access hot
plug BOSS 2.0**



Up to **2x**
bandwidth &
frequency with
PCIe 4.0

TARGET WORKLOADS

Ideal for traditional corporate IT, virtualization, database and analytics, AI/ML, and inferencing. High performance compute and accelerator configuration options enables enterprise-class workloads

Edge computing: where data is acted on near its point of creation

TARGET CUSTOMERS

SMB customers
Departments and ROBO of large enterprises and organizations
Data centers
Value-sensitive customers
looking for full performance



Windows Server 2022

with PowerEdge servers

EMEA Compute Community

DELL Technologies



Advanced multi-layer security



Hybrid Capabilities



Flexible Remote Working



Application Modernization

Launch Overview

On **Tuesday 7 September 2021** we will begin selling Windows Server 2022 OEM

Product Availability Matrix

	Current Version	Downgrade Media
PowerEdge 15G	<ul style="list-style-type: none">Windows Server 2022 Datacenter, Standard, EssentialsWindows Server 2022 OS User CALs and Device CALsWindows Server 2022 RDS CALs	Windows Server 2019 and 2016 Windows Server 2019 and 2016 CALs
PowerEdge 14G Servers – R240, R340, T140 and T340	<ul style="list-style-type: none">Windows Server 2019 Datacenter, Standard, EssentialsWindows Server 2019 OS User CALs and Device CALsWindows Server 2019 RDS CALs	Windows Server 2016 and 2012 R2
PowerEdge 14G Servers – All Other Models	<ul style="list-style-type: none">Windows Server 2022 or 2019 Datacenter, Standard, EssentialsWindows Server 2022 or 2019 OS User CALs and Device CALsWindows Server 2022 or 2019 RDS CALs	Windows Server 2019 and 2016 Windows Server 2016 and 2012 R2

Windows Server 2022 Editions

Enterprise class technology to drive any sized business

Windows Server 2022 Essentials Edition	Windows Server 2022 Standard Edition	Windows Server 2022 Datacenter Editions
is ideal for small businesses with up to 25 users and 50 devices	is ideal for customers with physical or minimally virtualized environments	is ideal highly virtualized and software defined datacenter environments.
25 users/50 devices CALs are included	Unlimited, based on CALs	Unlimited, based on CALs
1 physical or virtual ¹	2 VMs	Unlimited VMs
Must be root of domain	2 Hyper-V containers ²	Unlimited Hyper-V containers
Available in ROK and OEM	Available in COEM, ROK, and OEM	Available in COEM, ROK, and OEM

Windows Server 2022 Licensing:

Windows Server 2022 Essentials update



New SKU to replace Essentials – Windows Server 2022 Essentials (10 Core)



No changes to Windows Server 2022 Standard and Datacenter licensing



Windows Server 2019 Essentials

1-5 CPUs

Up to 25 users or
50 devices
– CALs are included

1 physical and
virtual instance

Must be
root of domain

Windows Server 2022 Essentials (10 Core)

10 cores
single socket server (1 CPU)

Up to 25 users or
50 devices
– CALs are included

1 physical and
virtual instance

Must be root of domain;
may not market to bypass the

16-core minimum Windows
Server license

Windows Server 2022 Feature Summary

Use Cases	Key Features	WS 2019 Std	WS2019 DC		WS2022 Std	WS2022 DC	AzStack HCI
Security All-up	Secured Core	-	-		●	●	●
	System Guard for data corruption attacks	-	-		◐	◐	◐
	Secure DNS client over HTTPS (DoH)	-	-		●	●	●
	Secured data at rest and in transit (AES-256 Encryption)	-	-		●	●	●
	Support for TLS 1.3	-	-		◐	◐	◐
Physical Machine	Increased Memory Support (5-level paging support to support larger memory servers)	-	-		◐	◐	◐
Virtualization Server	Virtualization Rights	2 VMs	unlimited		2 VMs	Unlimited	-
	Software Defined Network/Storage	-	○		-	◐	●
	Storage Spaces Direct	-	○		-	◐	●
	Storage Replica	-	○		-	◐	●
	In-place upgrades from WS2012 to WS2021	-	-		●	●	●
Containers	Containers Rights	Unlimited	Unlimited		Unlimited	Unlimited	-
	Hyper-V containers	Limited	○		Limited	◐	◐
	Faster and small images	○	○			◐	◐
Hybrid	Hotpatch	-	-		-	-	●
	Extended Network	-	-		-	-	●
	SMB over QUIC	-	-		-	-	●



2021 new feature



Enhancement



Quality improvement



2019 feature as is

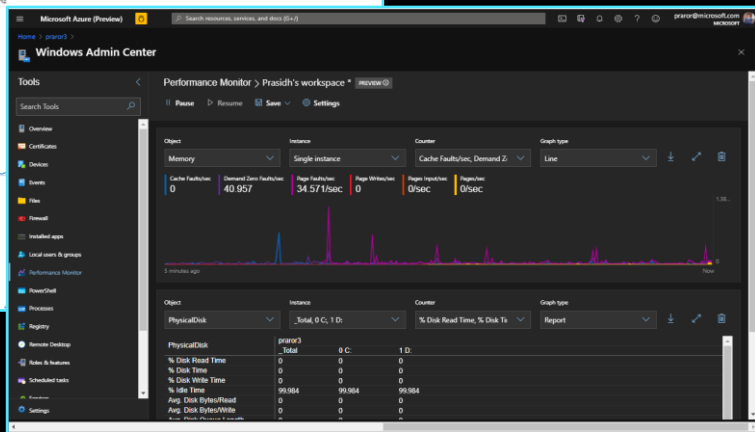
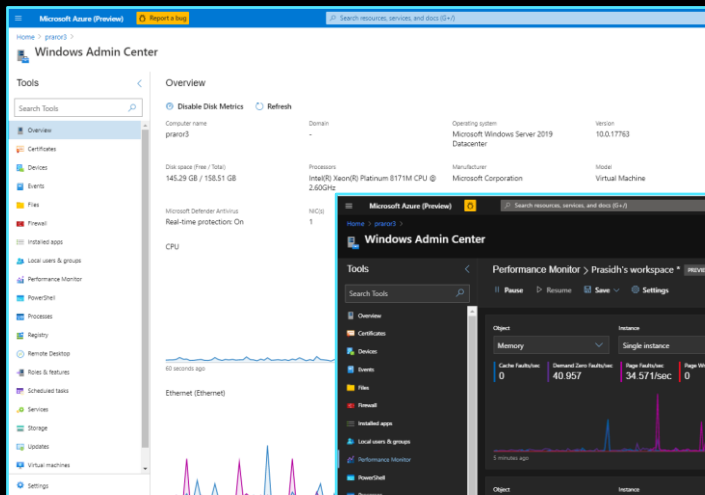
- Not present

*Only major and medium value features listed



Windows Admin Center

Available in Public Preview Azure



The Dell Technologies logo is centered on a dark blue background. The logo consists of the word "DELL" in a bold, white, sans-serif font, followed by the word "Technologies" in a lighter, white, sans-serif font. The "E" in "DELL" is stylized with three diagonal lines. The background features faint, glowing blue lines and cloud shapes, suggesting a network or cloud computing theme.

DELL Technologies